

MAXIM GORKI THEATER

Technical Rider – Studio Я

Am Festungsgraben 2

10117 Berlin

Index

Contact list	3
Technical Departments	3
Theatre workshops	3
Rehearsal stages	3
Stage view	4
Measurements and technical specifications	5
Access to stage + dimensions	5
Lighting.....	6
Fixed Installation.....	6
Stage lighting: Standard setup	7
Lighting Fixtures	8
Sound	9
Video.....	10
Projection Screens.....	10
Props.....	11
Fog machines.....	11
Music instruments.....	11
Dressers and Hair & Make up Dept.....	11

Contact list

Technical Departments

Maxim Gorki Theatre Am Festungsgraben 2 10117 Berlin technik@gorki.de
Staff entrance Dorotheenstr. 9 10117 Berlin

Main number	+49 30 202210	
Technical Direction	Bernd Klein, <i>Technical Director</i>	-339
	Benedikt Schröter, <i>Tech Production Manager</i>	-470
	Vanessa Wujanz, <i>Tech Production Manager Touring</i>	-336
Stage design	Alissa Kolbusch, <i>Head of Department</i>	-326
	Scenography assistants	-328
Stage Tech	Robert Rammelt <i>Head of Department</i>	-330
Lighting	Murat Özuzun, <i>Head of Department</i>	-317
Sound & Video	Christopher v. Nathusius, <i>Head of Department</i>	-334
Props	Jens Gebhardt, <i>Head of Department</i>	-329
Hair & Make up	Paula Karer, <i>Head of Department</i>	-363
Dressers	Andrea Schulz, <i>Head of Department</i>	-227

Theatre workshops

Bühnenservice Am Wriezener Bahnhof 1 10243 Berlin trettau@gorki.de

Main number:	+49 30 202210	
Workshops	Marcus Trettau, <i>Head of Department</i>	-601
	Maik Spät, <i>Deputy Head of Department</i>	-602
Costume	Thomas Maché, <i>Head of Department</i>	-701

Rehearsal stages

Hauptstraße 13 Entrance A 4th floor 10317 Berlin +49 30 36500492

Stage view

360° View of Studio stage:

<https://maps.app.goo.gl/UaGHwK9rcANJDnZi6>



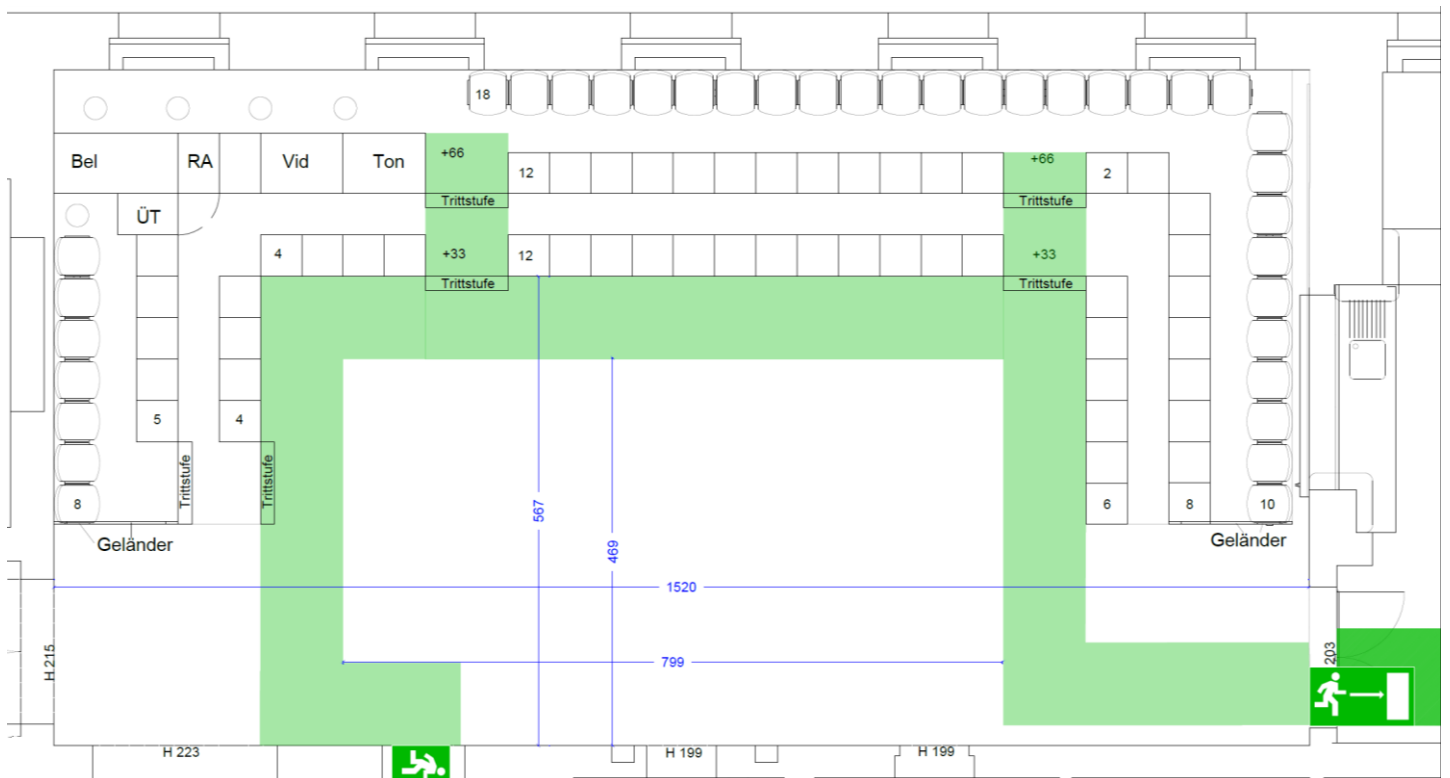
MEASUREMENTS AND TECHNICAL SPECIFICATION

ACCESS TO STAGE + Dimensions

The loading route to the stage is accessed through the yard behind the building of Studio Я. Access by truck is possible via a loading ramp or via stairs.

Studio Я is a ground level studio stage.

A three-tiered, U-shaped audience stand is installed (“arena setting”). The stand includes an FoH space as well as a reserved seat for the surtitle operator on the upper tier.



Please be aware that the emergency exits as well as the emergency exit ways must be free at all times.

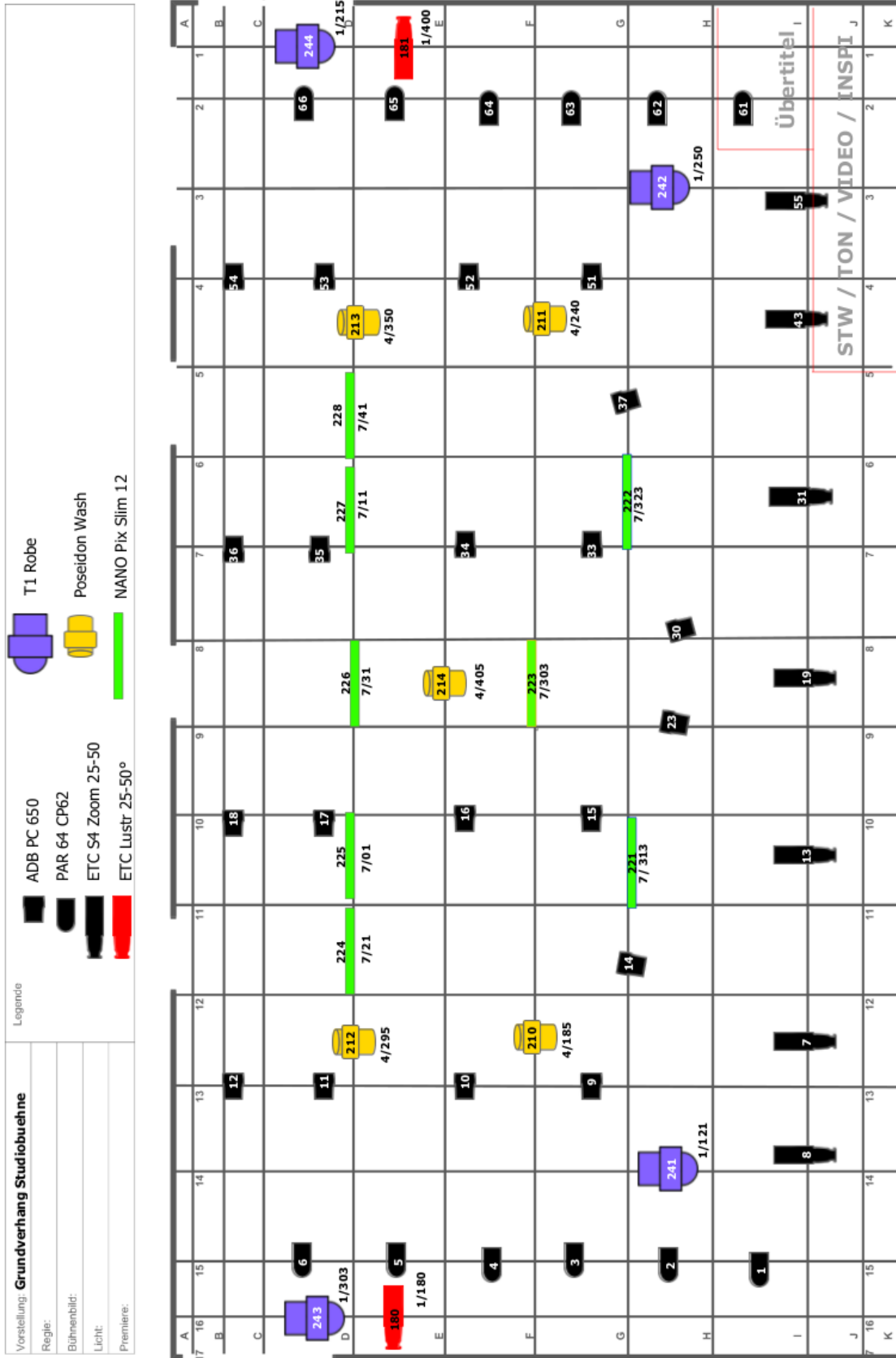
Stage	depth	5,67 m
	width	15,15 m
	grid height	3,20 m
	max. scenography height	3,17 m
Grid	point load	100 kg
	line load	25 kg/m
	pipe circumference	48,3 mm

Lighting

Fixed installation

Lighting control booth	lighting desks	<ul style="list-style-type: none"> • ETC Ion Xe • Network protocol sACN • 12.288 nodes
	network access points	<ul style="list-style-type: none"> • auditorium pit • stage manager's panel • rear stage • rank
Dimmer	Strand DX 25 digital	<ul style="list-style-type: none"> • 108 x 2,5 kW • 16 x 2,5 kW, ND
Circuit points	three phase current sockets	<ul style="list-style-type: none"> • 17 x CEE 32A, 400V, ND
	sockets in junction boxes	<ul style="list-style-type: none"> • 16A / 220V AC schuko socket • 63A Socket (DIN 15564) • 32A CEE 5-pole, 400V • fluorescent tube 3-pole. +PE, HAN3 • multicore 16-pole +PE, HAN16 • DMX 5-pole

Stage lighting: Standard setup



Lighting Fixtures

Quantity	Manufacturer	Model
4	Robe	T1 Profile
10	CLF	Poseidon XS Wash
24	ADB	PC 650W
8	ETC	S4 Zoom 25-50°
2	ETC	S4 Lustr 25-50°
12	LDDE	Nano PIX Slim 1200
12	Chauvet	COLORdash LED BAR
3	ETC	Colour Source CYC
8	Astera	Titan Tube
4	Astera	Bulb
2	Look	Unique 2.1 Haze

Sound

Location FOH: fixed, open in the pit, rear wall, middle

Mixing console	<ul style="list-style-type: none"> • Allen & Heath GLD 80 oder Allen & Heath Qu-16
Audio content delivery	<ul style="list-style-type: none"> • Ableton Live 8 with Macbook Pro • Audio Interfaces: RME Fireface 800 • MIDI Controller: Behringer BCF 2000
Microport system	<ul style="list-style-type: none"> • 4 channels Shure ULX-D • 4x pocket transmitter • 4x hand-held transmitter
Speaker systems	<p>Fixed installed PA:</p> <ul style="list-style-type: none"> - 6x E1-LS - 2x 1501-SUB <p>Mobile PA:</p> <ul style="list-style-type: none"> - Studt Akustik 4 x S 1214T/ 2 x S 215S <p>Mobile Monitors</p> <ul style="list-style-type: none"> - 4 x db Technologies Flexsys - 2 x H+K- D.A.R.T 12"

Video

Location of video booth: pit, booth in the back, stage left

Working space for surtitles: video room on 3rd floor

Video feed system	<ul style="list-style-type: none"> • Qlab3 with Macbook Pro
Video projectors	<ul style="list-style-type: none"> • 3x LCD Sharp XG P 10 XE / 3000 ANSI- Lumen Lenses: f=49,1-63,8 mm (zoom) ; f=35-45,5 mm (zoom) • 1x LCD NEC GT950 / 2000 ANSI- Lumen Lense: f=36.7-45,5 mm (zoom) • 2x DLP Casio XJ 560 / 3.000 ANSI Lumen Lense: f=20-40 mm (zoom)

For a list of available screens: see paragraph

Projection Screens

Screens				
Ratio	Dimension in cm	Type	Name	Info
16:9	280x160 (270x150)	front proj. / white	Stumpfl Vario 32	aluminium frame with feet
4:3	360x270 (350x260)	front&rear proj. white / grey	Stumpfl Vario 32	aluminium frame with feet front: white / rear: grey
spe- cial	320x245 (310x235)	rear proj. / grey	Stumpfl Vario 32	aluminium frame with feet

Props

Fog machines

Type	Output	Amount	Info
Viper NT	1300W	1	liquid-vaporizing fog machine
Hazebase Highpower	2600W	1	liquid-vaporizing fog machine
Power Tiny Akku	400W	2	liquid-vaporizing fog machine
Cryo-Fog	2300W	1	CO ₂ ("low lying" fog)

Music instruments

The props department is in charge of a number of various musical instruments, which are often used in our own productions. If you need any instruments, please check with the props dept.

Dressers and Hair & Make up Dept.

The wardrobes are located backstage right behind the scenery.

Female wardrobe: 6 places

Male wardrobe: 6 places

Maske up room: 3 places

Additional equipment:

- 1 washing machines
- 1 dryer
- 1 automatic steam irons